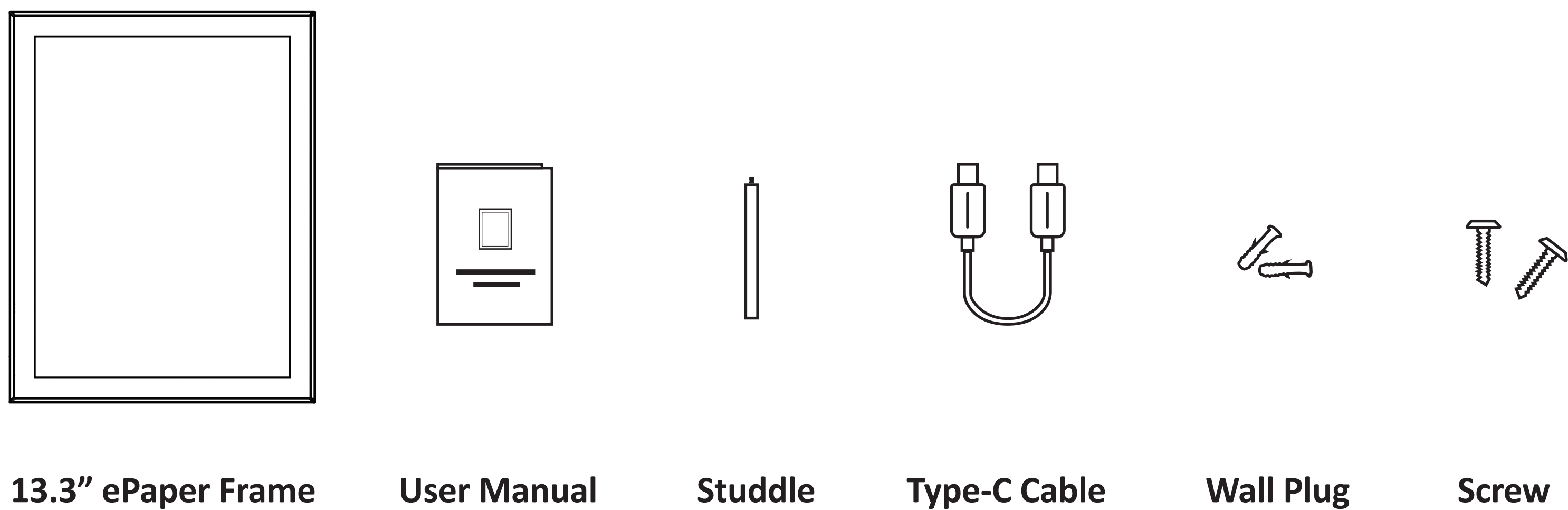




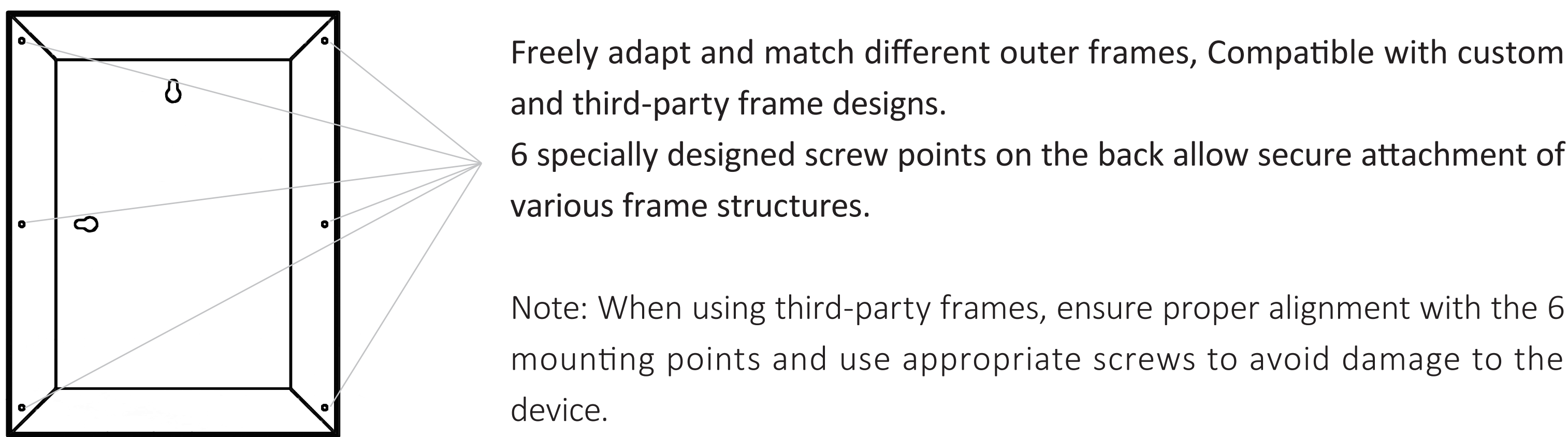
13.3" Modular Full-Color ePaper Frame

User Manual

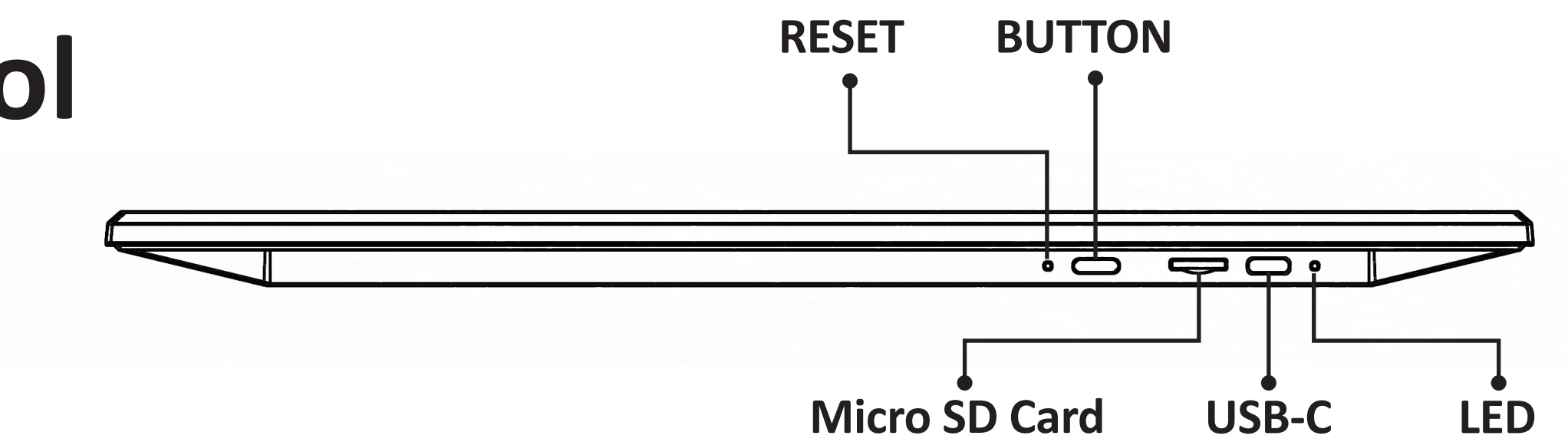
1. What’s in the Box



2. Modular Design



3. Button Control



Button Name	Operation Mode	Function Description
BUTTON	Press and hold for 3 seconds	Power On/Off - When powering on for the first time or after pressing the reset button, it directly enters the network configuration mode.
	Click	Enter device network connection status query after 2 seconds (status indicated by the blue indicator light)
	Double click (completed within 2 seconds)	Manually trigger re-entry into the network configuration mode, and the device refreshes the network configuration page (used for network configuration failure or reconfiguration).
	Double click in distribution	Exit network configuration mode
RESET	Click	Restore factory settings.

4. Indicator Light

Indicator lights are independently controllable: The red, green, and blue lights can be individually controlled for brightness, blinking frequency, and mode (such as constant on, fast breathing flash, slow flash). When there are conflicts in charging status display, the status added later takes precedence in display.

State Hierarchy:

- (1) Red light: indicates an abnormality in the charging/power supply system
- (2) Blue light: indicates network-related status
- (3) Green light: indicates normal operating status and full charge prompt
- (4) Orange light: Indicates OTA upgrade

Indicator light display	Status	Remarks
Red light stays on	Charging	If other indicator light behaviors are added during the charging process, the state added later will be displayed with priority.
Green light always on	Fully charged	If the device continues to be connected to power after being fully charged, the indicator light will automatically turn off after 2 hours.
	Normal operating state	When the button is pressed briefly, it stays lit for 15 seconds and then turns off.
	Power On	When the device is successfully powered on, it remains constantly lit for 15 seconds.
Red light flashing rapidly	Shutdown	Flash twice quickly after successful shutdown.
Red light flashing (On for 3 seconds, off for 3 seconds)	Low Battery (≤5%)	When it drops below 5%, the red light will start flashing for 30 seconds each time during the map run.
	Battery depleted	The red light flashes continuously until the device shuts down.
Blue light flashing (On for 3 seconds, off for 3 seconds)	Distribution Network Mode	Success: The blue light will stay on for 30 seconds and then turn off.Failure: The indicator light for the first network configuration goes out after 10 minutes (but the status and page persist for 20 minutes), and the indicator light for the second network configuration goes out after 3 minutes, with the network configuration status turned off.
Blue light flashes rapidly (0.5 second interval)	Network anomaly	Flashes continuously for 30 seconds.
Green light + Blue light alternate slow flashing	Password is incorrect	Close the network configuration mode after 5 consecutive password errors.
Orange light stays on	OTA Upgrade	Extinguished upon completion of upgrade.
Red, blue, and green lights flash alternately	Restore Factory Settings	After completion, the green light flashes 3 times for confirmation. Automatically shuts down after the initial image is scanned.

5. Product Installation

Step 1: Position the Frame

Place the frame on the wall and draw a light horizontal line along the top edge.

Step 2: Mark Mounting Points

Portrait hanging: Measure 50 mm down from the line

Landscape hanging: Measure 50 mm down from the line

Step 3: Drill & Install

Drill $\Phi 6$ mm holes at marked points

Insert wall plugs

Screw in screws, leaving 4–5 mm exposed

Step 4: Hang the Device

Align keyhole mounts with screw heads and slide downward to lock.

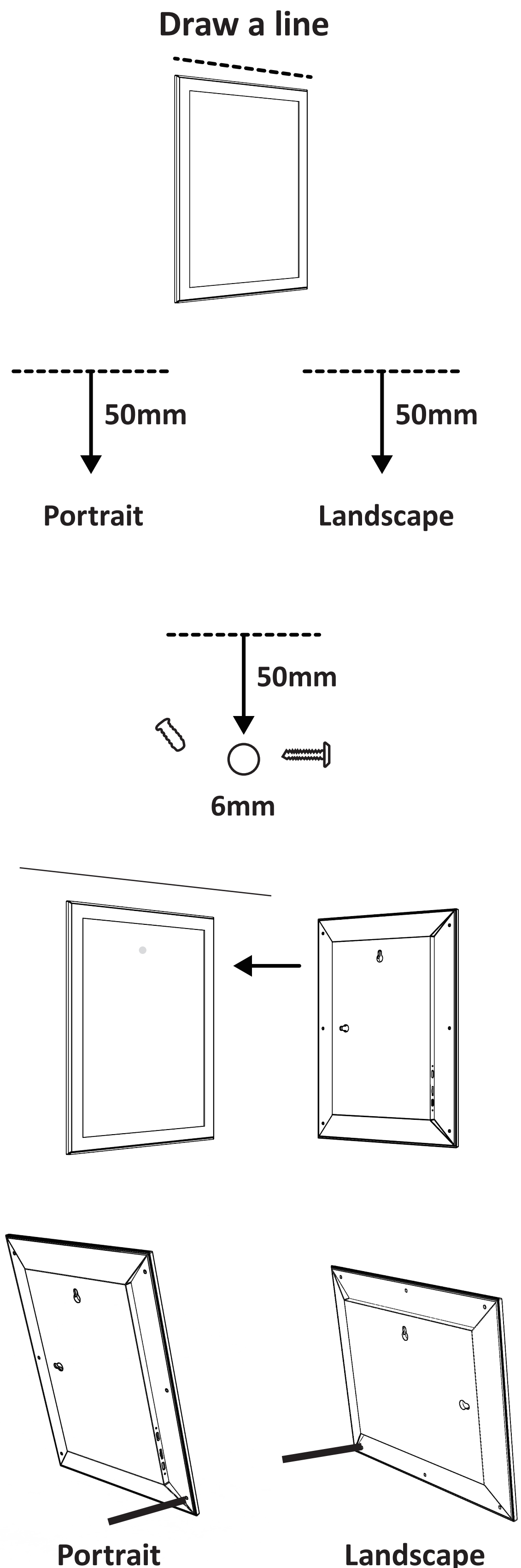
Ensure all wall plugs and screws are securely fastened before hanging.

Desktop Placement

Screw the support rod into the screw hole at the lower left or lower right corner on the back of the frame to stand it stably on a desktop for display.

6. Low Battery

When a low battery indicator appears at the bottom of the screen after refreshing the picture, please charge the photo frame. You can check the current battery level on the App device page. When the battery level is above 5%, the low battery indicator on the photo frame will disappear after the next picture refresh operation.



7. Specification

Display Size	13 . 3 inch
Panel Type	E Ink Spectra™ 6 ePaper Display
Display Color	Red, Yellow, Blue, White, Green, Black
Active Area	202.8 × 270.4 mm
Pixel	1600 × 1200
Aspect Ratio	4:03
DPI	150
Micro SD Card	Yes
LED	RGB
Charging Port	USB TYPE-C
WIFI	2.4 & 5 GHz Wi-Fi 6 (802.11ax)
Bluetooth	5
Image Formats	JPG、 BMP、 PNG
Update Time	12s~18s
Update Methods	Micro SD Card, App
BUTTON	Power On/Off, Network Pairing, Status Check
RESET	Factory Reset
Material	ABS+PC
Product Dimensions	242.11 × 309.71 × 16 mm
Package Dimensions	410 × 300 × 80mm
Net Weight	0.73KG
Gross Weight	1.18KG
Battery	5000mAh
Battery Life	Up to 9 mouths (at 1 refresh/day)
Storage Temperature	-25°C to 60°C
Operating Temperature	0°C to 50°C
Humidity	30% to 90% RH

8. Maintenance & Care

Cleaning the Screen

Use soft, dry microfiber cloth. Do not use alcohol, solvents, or liquid cleaners, Avoid moisture on screen surface.

General Maintenance

Keep away from high humidity, dust, and magnetic fields. Avoid dropping or pressing screen surface.
For long-term storage, perform full screen refresh every few months.

Battery Care

To maintain battery health and prolong its lifespan, please follow these guidelines: If the device is not used for an extended period, charge the battery to approximately 50-70% at least once every six months. This prevents the battery from fully depleting, which can cause permanent damage.

9. Important Safety Instructions

- Use only official or certified power adapters and Type-C cables for charging. Using unapproved chargers may cause fire or electric shock.
- Do not expose the device to water, rain, high humidity or extreme temperatures. Prolonged exposure may damage the display or internal electronics.
- Do not drop, bend, or apply pressure to the screen surface or frame. A cracked display or deformed frame cannot be repaired under normal use.
- Unauthorized disassembly, modification or repair attempts may expose you to risk and void the warranty.
- Keep the device and small accessories such as screws, wall plugs and power cables out of reach of children and pets. These parts may present a choking or entanglement hazard.
- It is also recommended to avoid plugging the device into overloaded or ungrounded outlets.
- Long-term storage: If the device is unused for months, allow a full screen refresh every few months to prevent ghosting or residual images.
- Do not press or scratch the E-Ink surface with sharp or pointed objects such as keys or pens - the display is fragile and may crack or deform under pressure.

10. Connect with the App

Step 1: Download the App

Scan the QR code below to view the download page with detailed instructions and platform-specific links.

Note: Allow camera permissions when prompted to scan the QR code.
The download page contains specific instructions for iOS and Android devices, as well as desktop applications.

Step 2: Create Account

Open app and tap "Sign Up"

Enter email and create password

Step 3: Connect Your Device

Press and hold power button for 3 seconds

Tap "+" in app to scan for device

Confirm MAC address last 4 digits

Select Wi-Fi network and enter password

Step 4: Send Images

Choose from gallery or your personal library

Tap "Send" to display image

Processing takes 10-15 seconds

Screen will flicker during image update (normal)